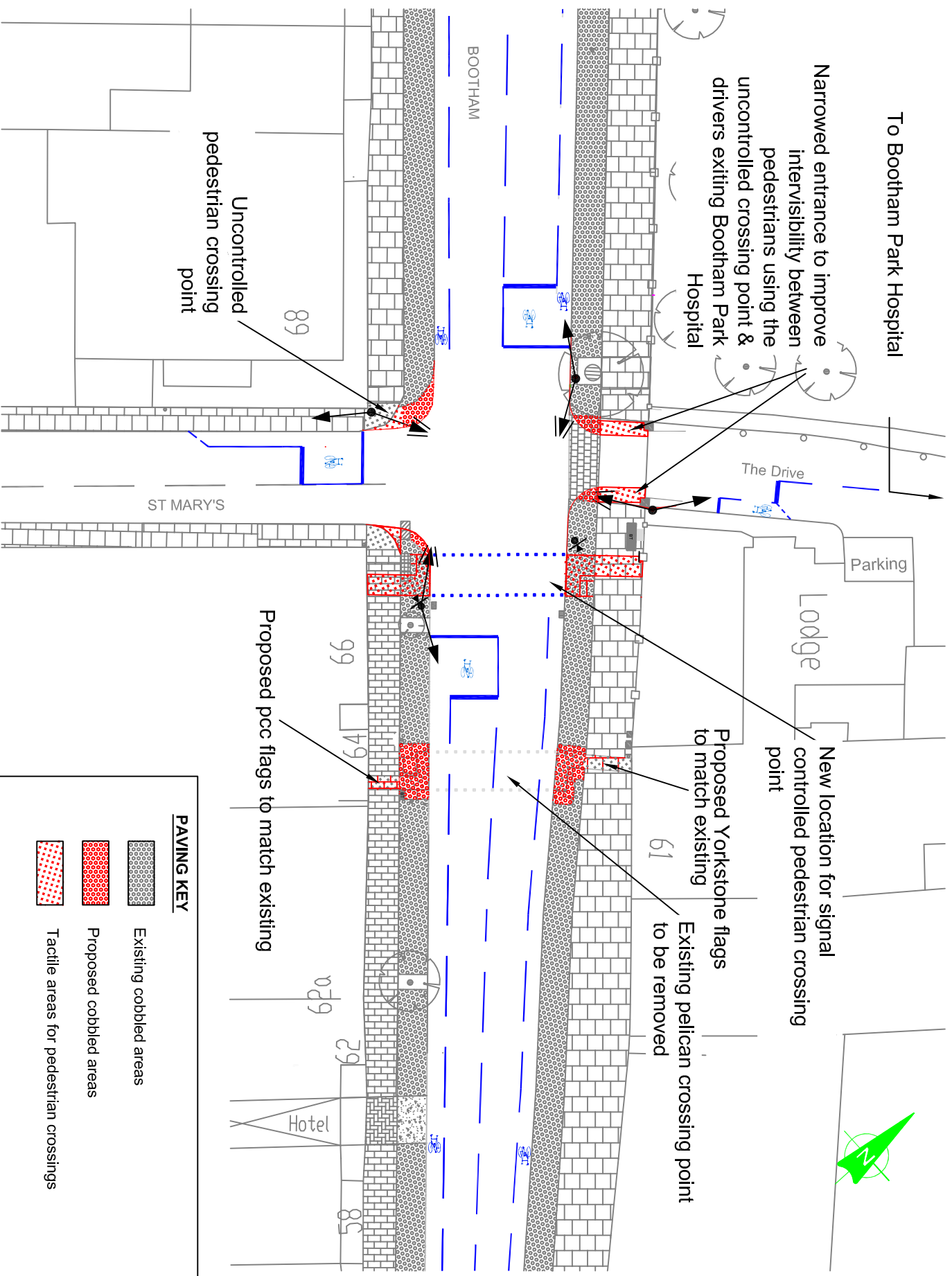
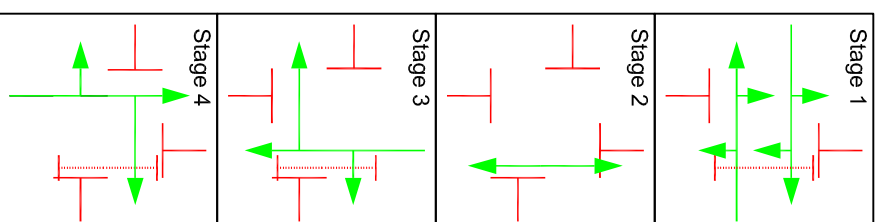


To Bootham Park Hospital

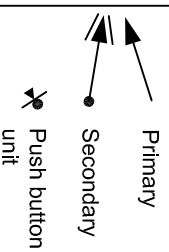
Narrowed entrance to improve
intervisibility between
pedestrians using the
uncontrolled crossing point &
drivers exiting Bootham Park
Hospital



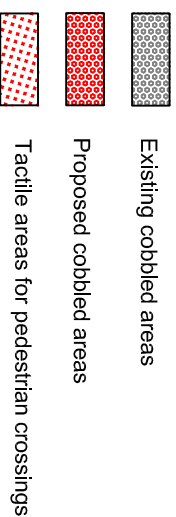
**PROPOSED
SIGNAL STAGES**



SIGNAL KEY



PAVING KEY



Proposed pcc flags to match existing

Uncontrolled
pedestrian crossing
point

ST MARY'S

Parking

Lodge

The Drive

BOOTHAM

89

99

49

61

079

29

85

Hotel